

MobiLite 4

MobiLite 4, based on the Intel Pentium Core 2 Duo technology is built from the inside and out for tough environments. Magnesium casing, low power consumption, high connectivity and CPU power to match makes this a perfect solution for the most demanding vehicle applications.



The concept is expandable, upgradeable and suits special applications. We have built in all the experience from our co-operation with military, police and vehicle manufacturers from all over the world.

MobiLite 4 is built for extreme environments. The PC has magnesium casing and an internal climate processor for operation down to -20 degrees.

MobiLite 4 is built to be used:

- Stand alone
- With Docking List (DockLite)
- With vehicle docking (CarDock)

All accessories for the DM7/DM8 fits MobiLite 4.

The MobiLite 4 is easy to service. Together with our SATA Solid State Disks it's extremely reliable in operation, covering a temperature range of -40 -> +70 degrees!

The MobiLite 4 fulfils standards such as MIL-STD-810F, MIL-STD- 461E and IP54

MobiLite 4

Specifications

Intel Pentium 1.06 GHz ULV Core 2 Duo
RAM 1GB - 3 GB, DDR-II 533MHz
Integrated 32-bit 3D/2D gfx core with 128 MB shared RAM
Removable 2.5" SATA HDD 120GB - 160GB SATA HDD
1 x internal mini PCI slot, 1 x internal mini PCIe slot
16-bit sound card
Standard ports:

- DC in
- USB 2.0 x 1
- RS232 x 1
- RJ45 LAN (10/100/1000)
- 1 x PCMCIA (PC card) slot, 1 x Express card slot

Ports special connector: (docking or cable, please note, only example, total 120 pins)
1-3 RS232, 4 x USB, LAN, Modem, Audio x 2, DC, GND, CRT, DVI, External antenna

Material Case: Magnesium/Aluminium

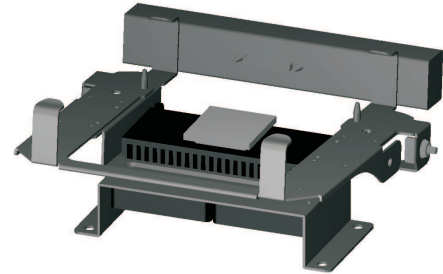
Standards: CE, FCC, Mil Std 810F, IP54, Mil Std 461E

Size: 250mm x 190mm x 35mm

Weight: approx. 1,5 Kg (depending on configuration)



DockLight



CarDock

Options

- Removable 2.5" SATA Solid State Drive
- Programable "watchdog"
- Holder for vehicle mounting
- Docking list with DVI and Analog LCD connection
- GSM/GPRS, HSDPA
- GPS
- Bluetooth
- W-Lan a/b/g
- Modem v.90
- Extra RS232/422/485
- Built in vehicle adapter 10-32V
- 12,1" and 15" DVI TFT LCD with USB hub and speaker with or without touch screen
- Internal UPS battery
- Shock absorber mount
- CarDock, vehicle docking with cooler (active or passive)



Shock absorber mount

LOGiN

LogIn Crete AB
Box 22079, S-250 22 Helsingborg
Sweden
Tel +46 42 250000, Fax +46 42 250025
email info@login.se
www.login.se